

**NDUFA7 Antibody (C-Term)**  
**Purified Rabbit Polyclonal Antibody (Pab)**  
**Catalog # AP21706b****Specification**

---

**NDUFA7 Antibody (C-Term) - Product Information**

Application	WB,E
Primary Accession	<a href="#">O95182</a>
Reactivity	Human, Mouse
Host	Rabbit
Clonality	polyclonal
Isotype	Rabbit IgG
Calculated MW	12551

**NDUFA7 Antibody (C-Term) - Additional Information****Gene ID** 4701**Other Names**

NADH dehydrogenase [ubiquinone] 1 alpha subcomplex subunit 7, Complex I-B145a, CI-B145a, NADH-ubiquinone oxidoreductase subunit B145a, NDUFA7

**Target/Specificity**

This NDUFA7 antibody is generated from a rabbit immunized with a KLH conjugated synthetic peptide between 80-110 amino acids from human NDUFA7.

**Dilution**

WB~~1:2000

E~~Use at an assay dependent concentration.

**Format**

Purified polyclonal antibody supplied in PBS with 0.09% (W/V) sodium azide. This antibody is purified through a protein A column, followed by peptide affinity purification.

**Storage**

Maintain refrigerated at 2-8°C for up to 2 weeks. For long term storage store at -20°C in small aliquots to prevent freeze-thaw cycles.

**Precautions**

NDUFA7 Antibody (C-Term) is for research use only and not for use in diagnostic or therapeutic procedures.

**NDUFA7 Antibody (C-Term) - Protein Information****Name** NDUFA7

**Function** Accessory subunit of the mitochondrial membrane respiratory chain NADH dehydrogenase (Complex I), that is believed not to be involved in catalysis. Complex I functions in

the transfer of electrons from NADH to the respiratory chain. The immediate electron acceptor for the enzyme is believed to be ubiquinone.

#### Cellular Location

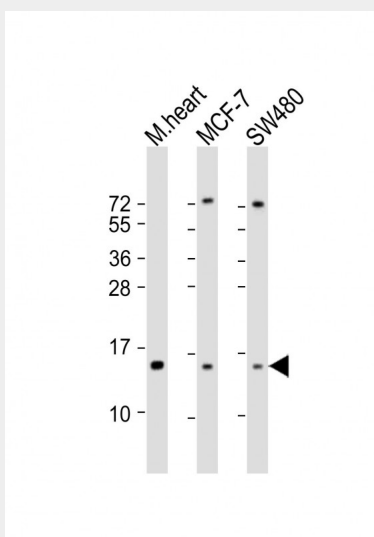
Mitochondrion inner membrane; Peripheral membrane protein; Matrix side

### NDUFA7 Antibody (C-Term) - Protocols

Provided below are standard protocols that you may find useful for product applications.

- [Western Blot](#)
- [Blocking Peptides](#)
- [Dot Blot](#)
- [Immunohistochemistry](#)
- [Immunofluorescence](#)
- [Immunoprecipitation](#)
- [Flow Cytometry](#)
- [Cell Culture](#)

### NDUFA7 Antibody (C-Term) - Images



All lanes : Anti-NDUFA7 Antibody (C-Term) at 1:2000 dilution Lane 1: mouse heart lysate Lane 2: MCF-7 whole cell lysate Lane 3: SW480 whole cell lysate Lysates/proteins at 20 µg per lane. Secondary Goat Anti-Rabbit IgG, (H+L), Peroxidase conjugated at 1/10000 dilution. Predicted band size : 13 kDa Blocking/Dilution buffer: 5% NFD/MTBST.

### NDUFA7 Antibody (C-Term) - Background

Accessory subunit of the mitochondrial membrane respiratory chain NADH dehydrogenase (Complex I), that is believed not to be involved in catalysis. Complex I functions in the transfer of electrons from NADH to the respiratory chain. The immediate electron acceptor for the enzyme is believed to be ubiquinone.

### NDUFA7 Antibody (C-Term) - References

Loeffen J.L.C.M.,et al.Biochem. Biophys. Res. Commun. 253:415-422(1998).  
Zhang Q.-H.,et al.Genome Res. 10:1546-1560(2000).

Murray J.,et al.J. Biol. Chem. 278:13619-13622(2003).  
Burkard T.R.,et al.BMC Syst. Biol. 5:17-17(2011).